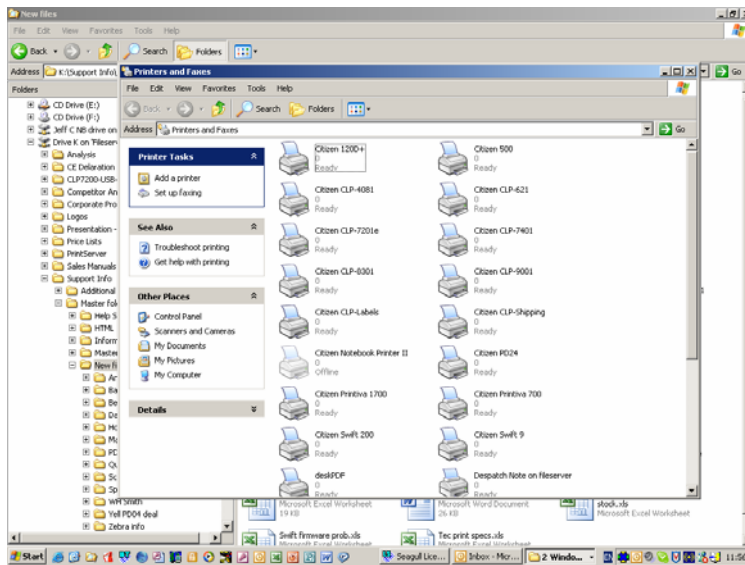


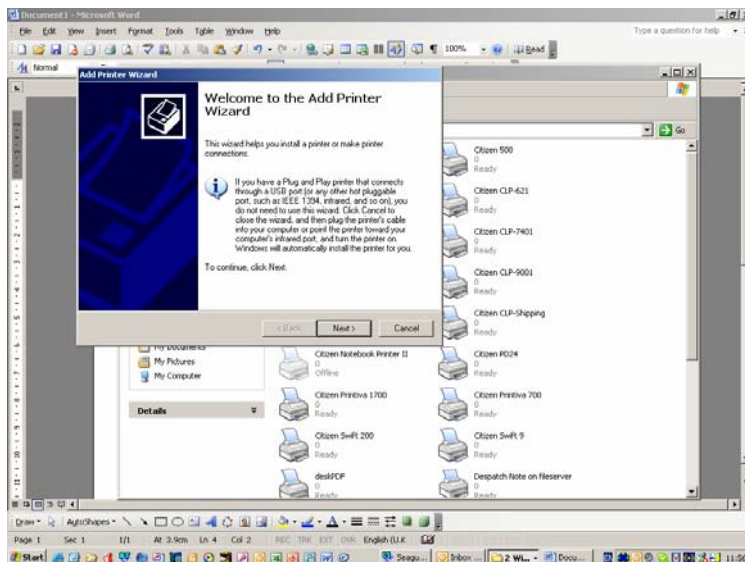
Installing a printer driver in Windows (in this case XP)

To get to this point, click on the Start button, move the mouse to Settings and then Printers and Faxes in XP, running in classic mode (in the normal XP windows screens click Start, Settings, Control panel, Printers and faxes)

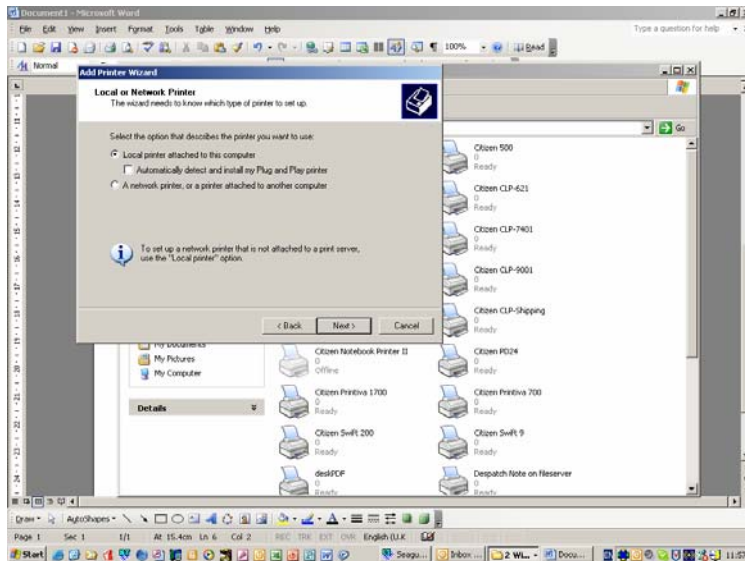
The following print screens hopefully show the process of installing a printer driver from the point just before clicking on the “Add Printer” button on this screen.



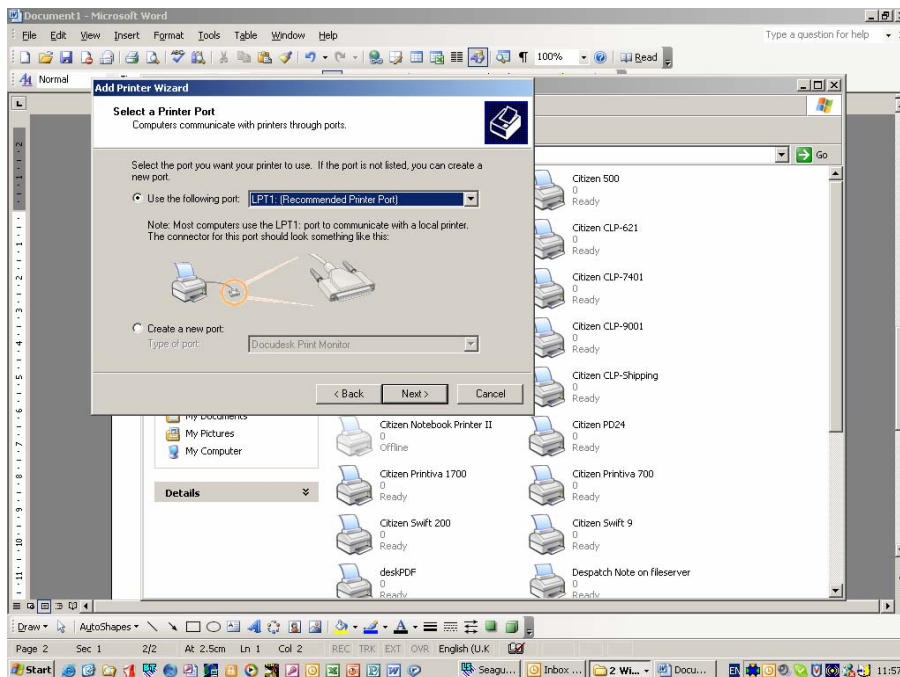
Once you have clicked on the “Add Printer” button you will see a screen similar to the one below



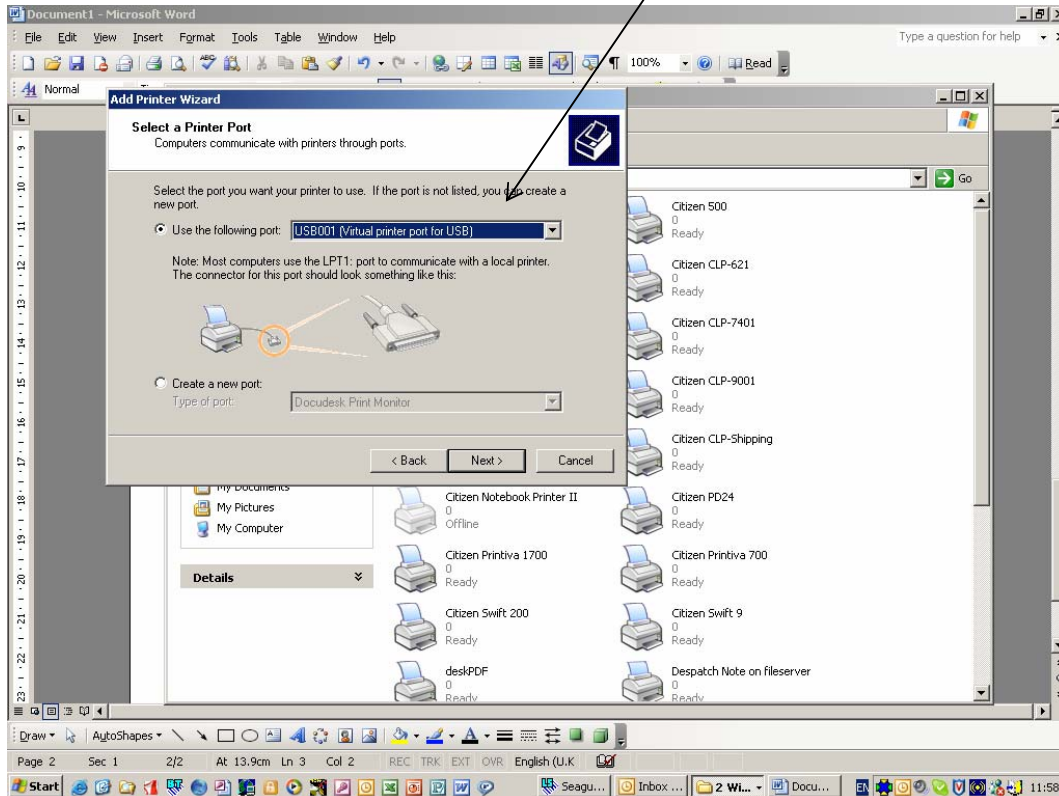
Clicking on the “Next” button and you will see this screen. Here you have the options to select a Local or a Network printer; you also have the option of automatically finding and installing a plug and play printer. The process used in this document is the more conventional one of installing a Local printer manually



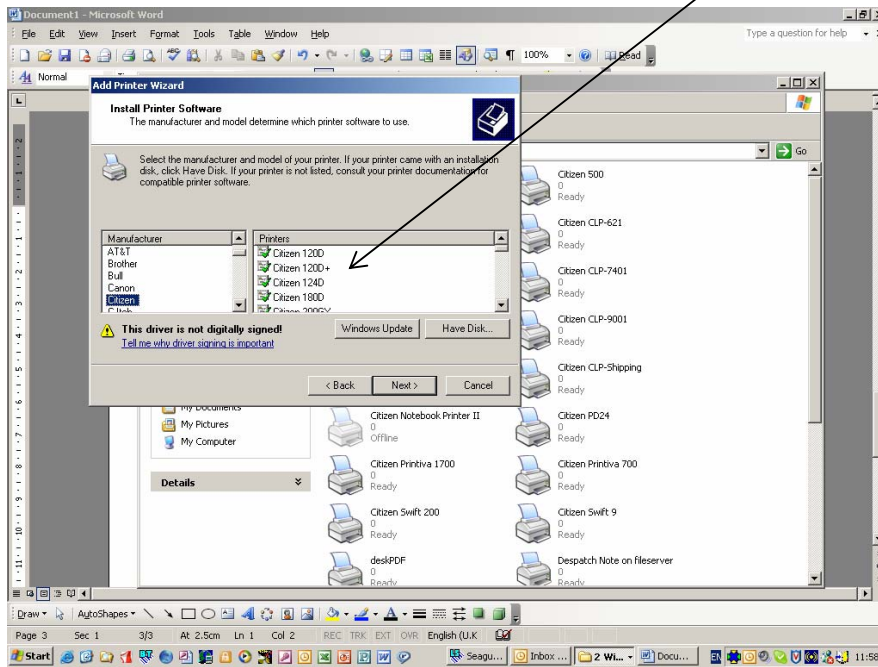
Clicking “Next” gives you the screen below and highlighted is the local LPT1 port (this is more commonly called the standard printer or parallel port in most documentation provided by Citizen Support)



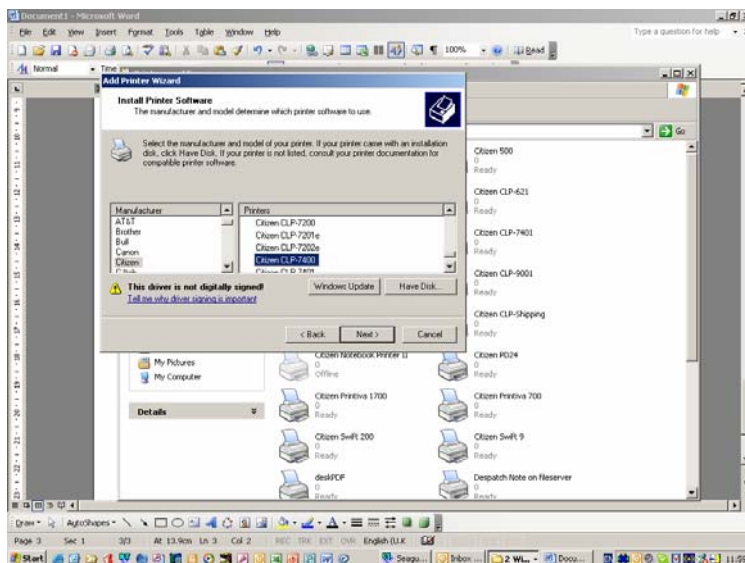
If you want to use a USB printer port, click on the down arrow, you will see a list of all “ports” available on your PC with USB port/s at the bottom of this list. Once selected you will then see something similar to below.



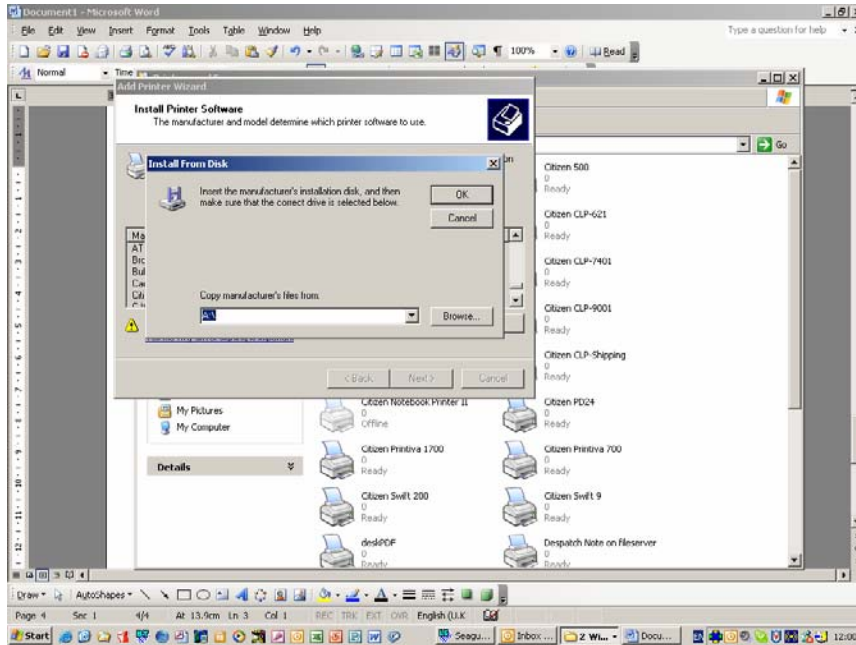
Clicking next will produce this screen; it will actually show the last manufacturer you used to install a driver, this was Citizen. On the right side of this screen is the list of printers Microsoft have provided. It will not normally include additional printers such as the CLP models unless you have already installed a previous CLP model onto your PC. If you have installed a previous driver you will find the additional printer names at the bottom of the list shown here and in the next screen



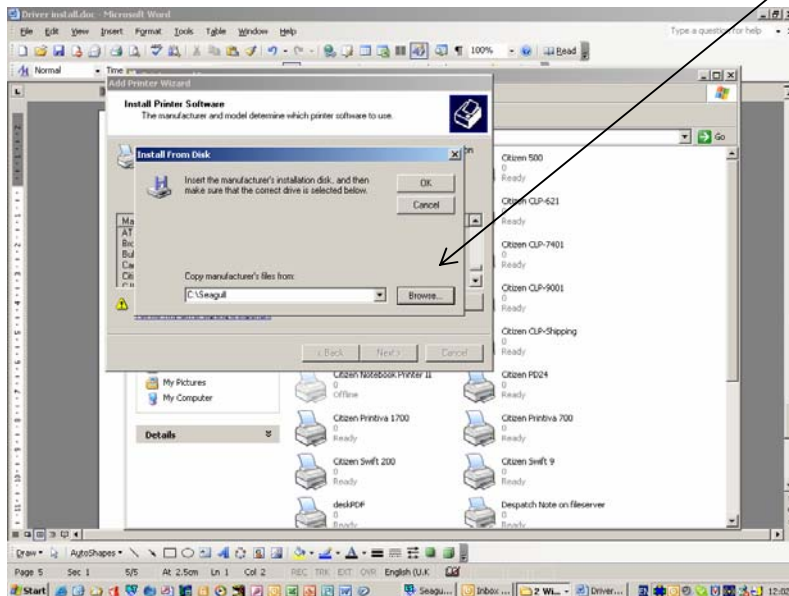
If you have already installed a previous CLP printer you will find the CLP models at the bottom of the list of printer names (this only happens in XP, most other versions of windows do not always include this additional list of printers). I have selected the CLP 7401 printer, click “Next”.



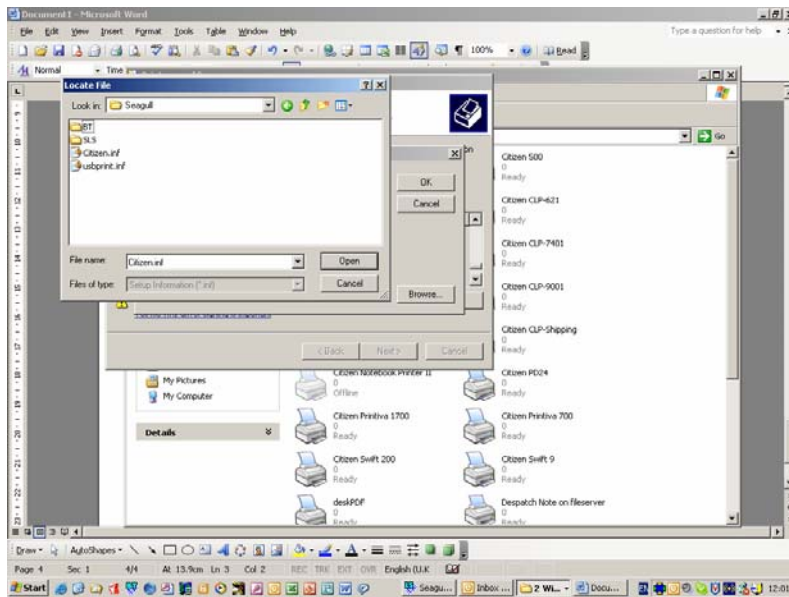
If you have not installed other drivers, from Citizen, in this case but also from any other manufacturers, you will need to click on the “Have Disk” (shown on the previous screen) button and you will be presented with this screen, note the location offered by Microsoft, this needs to be changed if the driver you want to install is not on a floppy disk.



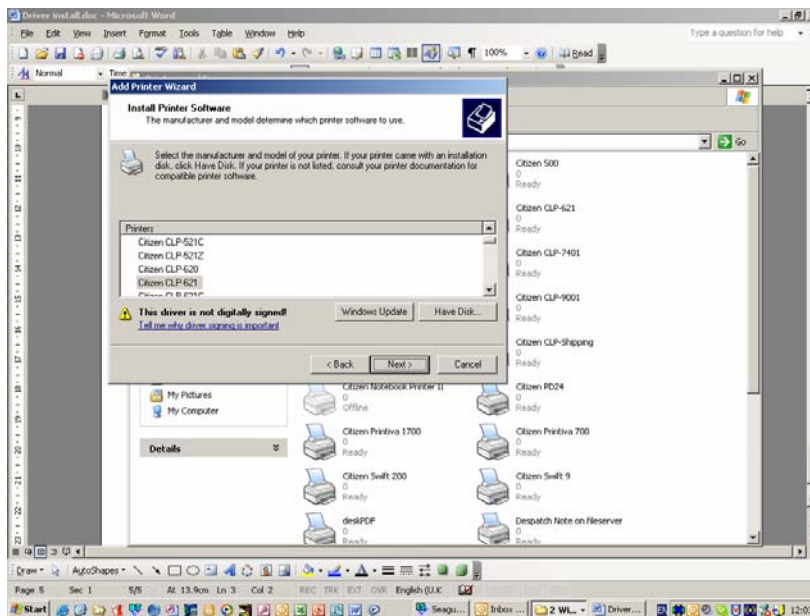
If you click on the Browse button, you can select the location where you have stored the driver you want to install. If it is on a CD this will normally be the D: drive (or possibly E drive) on your PC. Alternatively, if like me, you have down loaded the driver from a web site and you have expanded it (using XP or WinZip as examples) you will need to find its correct location on the PC. In this case after I expanded the driver and it installed itself it added a new folder to this PC called Seagull



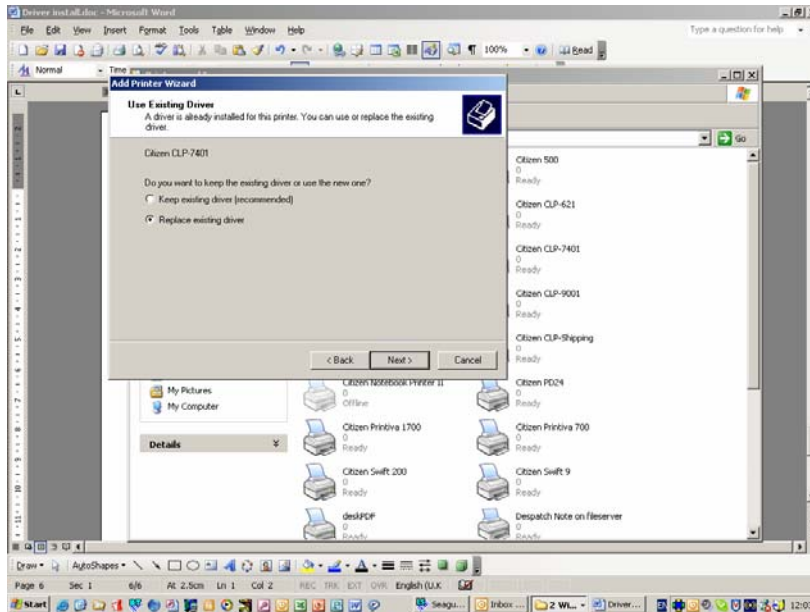
Once you click the OK button above, you will see the screen below, showing the “Citizen.inf” file. Select it and click the open button.



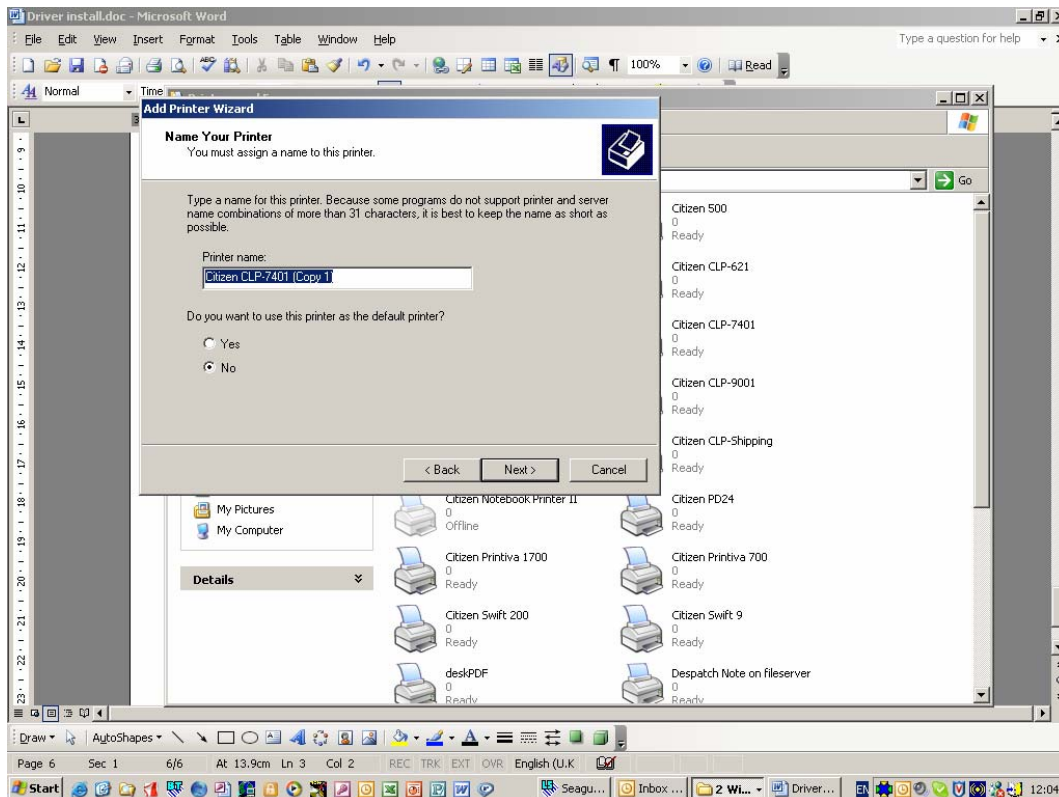
You are now able to select the printer you want to install, highlighted is the CLP 621 but you can run up and down the list of CLP printers and select the one you actually need to install.



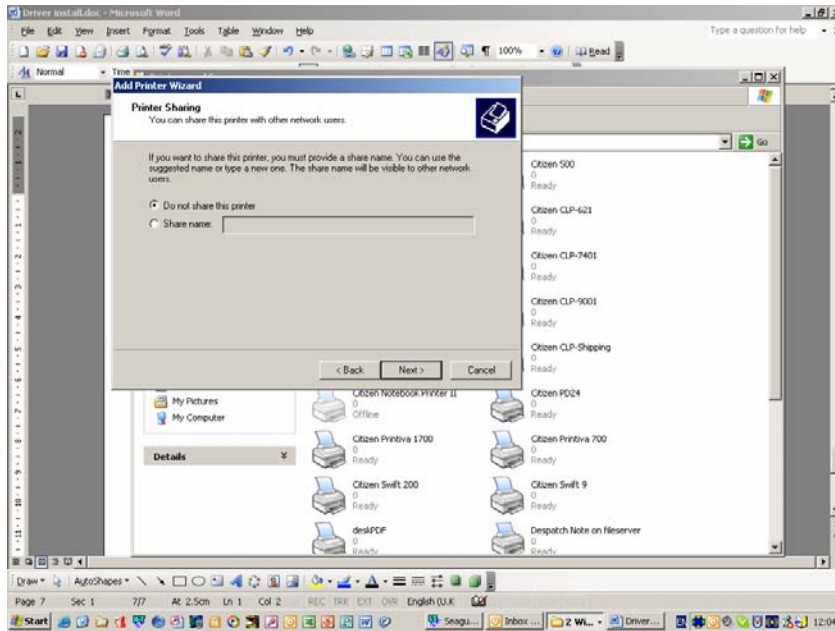
In the example below I have selected the CLP 7401



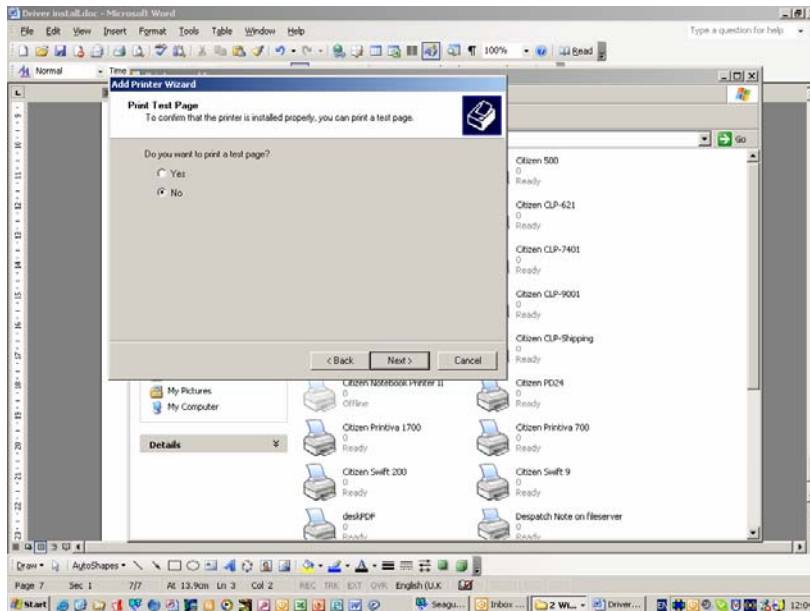
After I clicked “Next” this screen appeared, because I selected “replace” the driver has named the printer for me but this can be changed to what ever name you need, either now or at any stage in the future.



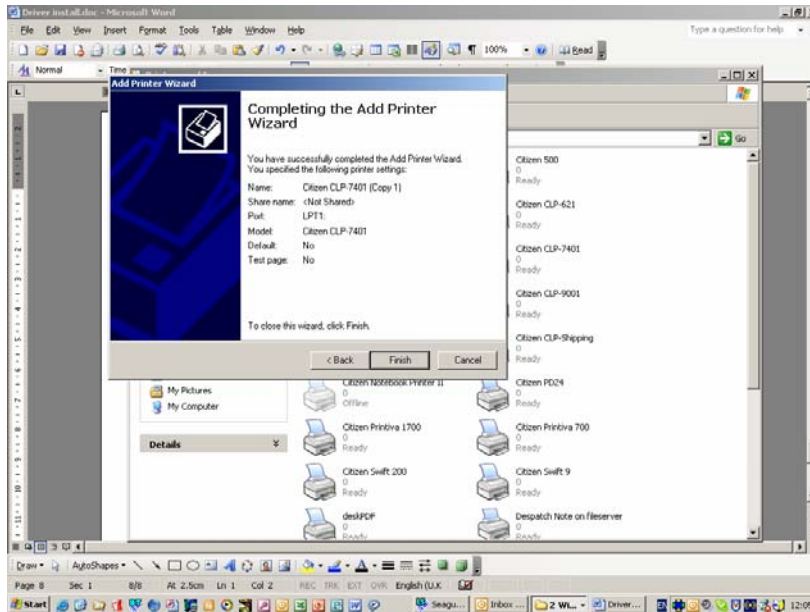
Click “Next” and you see this screen, by default you would not normally share the printer. However, if you wish to make your printer available to others over a local network for example, click “share” and give it a name. This will then be seen over a network and can be printed too by other users. A point to note, because the printer is attached to one PC other users can only see it on the network if the PC, the printer is connected to, is turned ON.



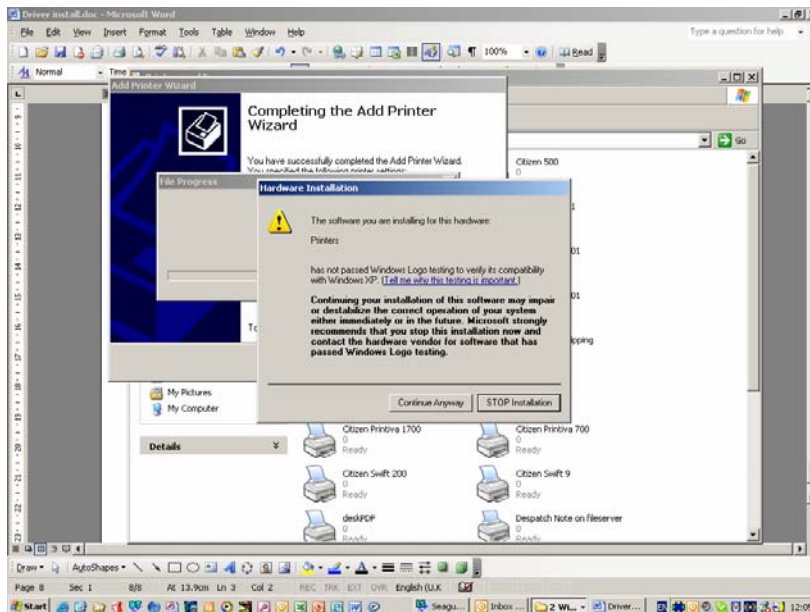
If you want to print a test page after the printer driver is installed, select “Yes”



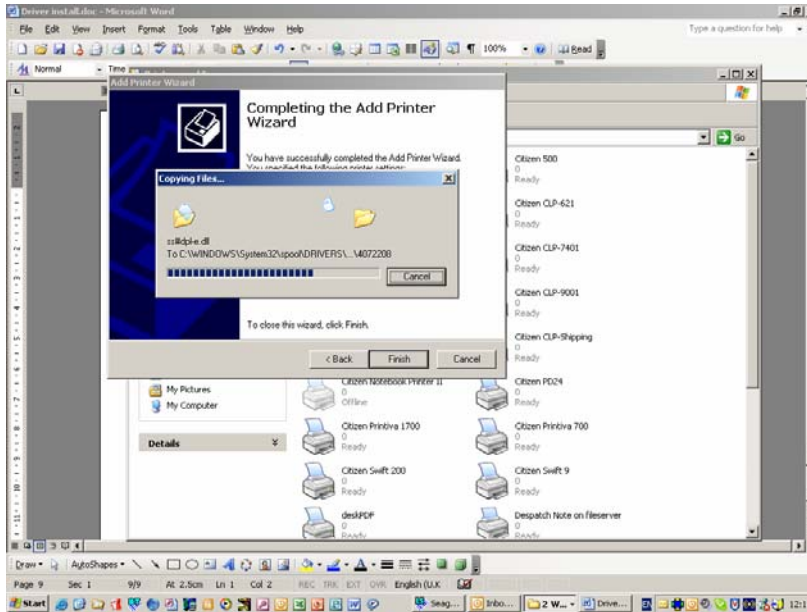
Clicking “Next” above, you will see the following screen, explaining that the driver install process is nearly finished and what port you have selected, click “Finish”



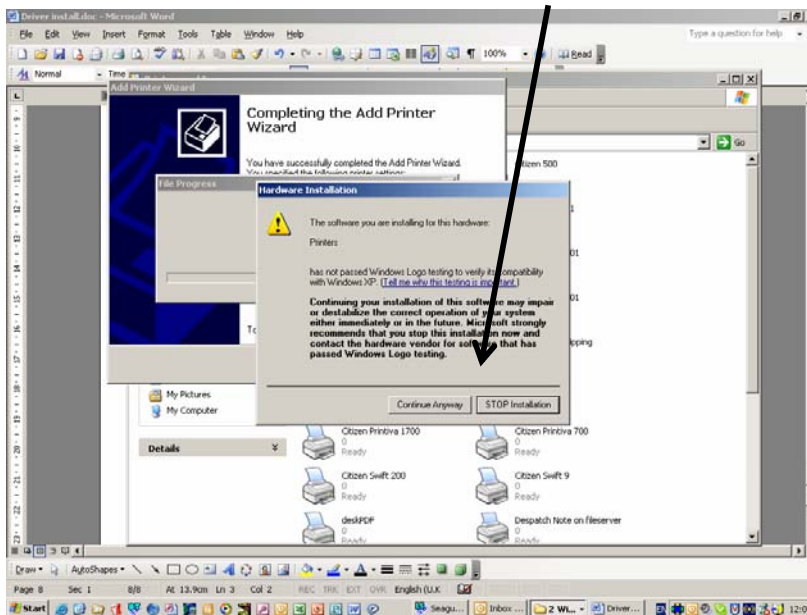
Almost immediately you will see the following screen explaining that the driver is not signed. This is not a problem, just another way that Microsoft makes money. Most companies supplying printer drivers have this screen appearing. It is nothing to worry about and clicking continue allows the driver to install normally.



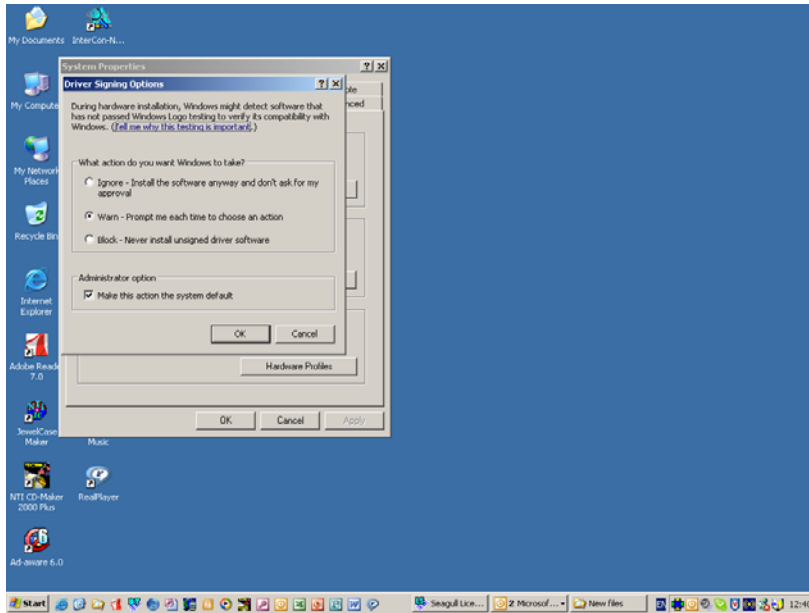
If all goes to plan you should see a screen similar to the one below, where files are being installed.



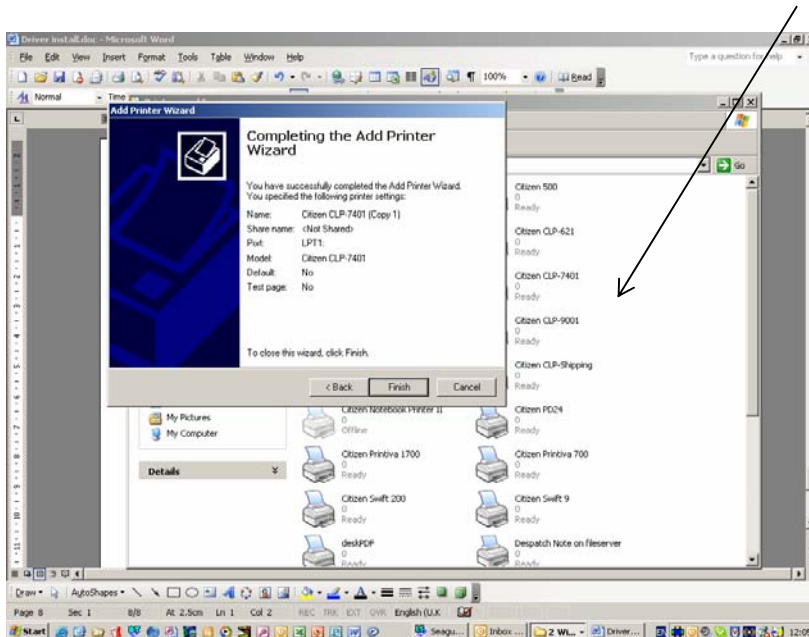
If however you get a screen where the two buttons have been replaced by just one stating “OK”. This could mean you have the option of “block unsigned printer drivers” switched ON.



To change it, go to the “My Computer”, right click on the “My Computer” icon and select “properties”. From this, select the hardware tab and click the “Driver Signing” button. You will be presented with this screen. If the bottom option, “block” is ticked, change it to the middle one (as below). You still get the driver “Unsigned message” but you can install it.



If all has gone as expected, you will see this screen again for a short period, it will then disappear and the printer driver you installed will be added to the list. A new icon, representing that printer newly installed, has been included to the list shown below.



Citizen have provided this as an example if there are any errors we apologise and would request that errors are reported back to us for inclusion in a revised version.