

## Switching on a Printer Driver option – Tear Bar, Cutter, Peeler etc

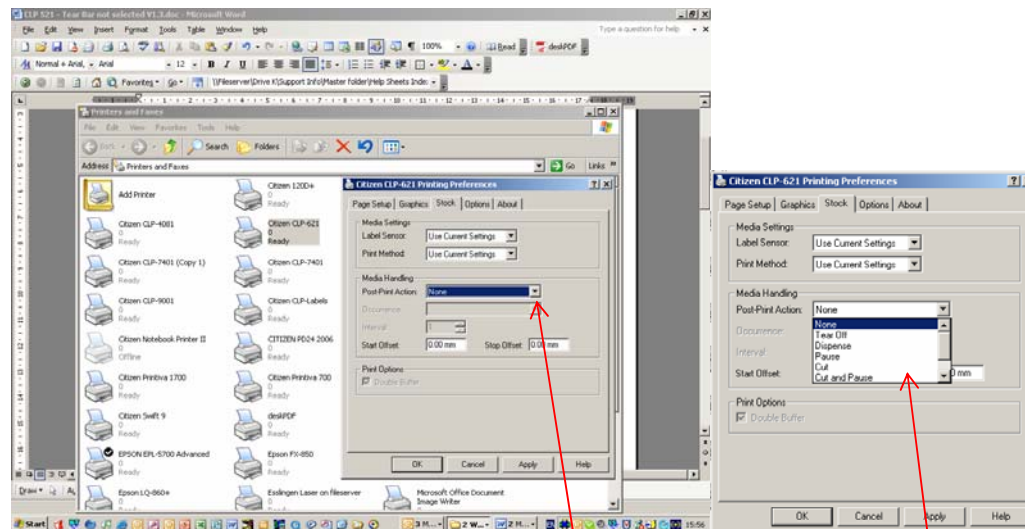
We regularly receive calls for users who want their labels to be printed and then advanced to the Tear Bar, on the printer. In most cases, this is because the printer driver has not had the option activated.

By default the printer driver does not have any option “switched on” so, if you want to have the labels print and then advance to the Tear Bar (or, **when fitted**, the Cutter to cut or the Peeler to peel) the option should be turned on in the Printer driver and because it seems to work better, in which ever printer is being used, as well.

The Printer driver, written by Seagull Scientific is released and updated on a regular basis. The changes in version number take place every time Seagull make a change to their driver, regardless of which manufacturer is involved. Because of this you may find, when following the instructions below, there are slight differences in the screen you see and the one in this document. Where possible we will try to note these changes.

### Switching on a driver option – Current version 7.0.4

Go to the printer driver icon (Start>settings>printers OR Start>settings>control panel>printers – Depending on how Windows XP is set, Classic or Normal mode) and right click on it. Run down the list to Printing preferences and you will be presented with the screen below

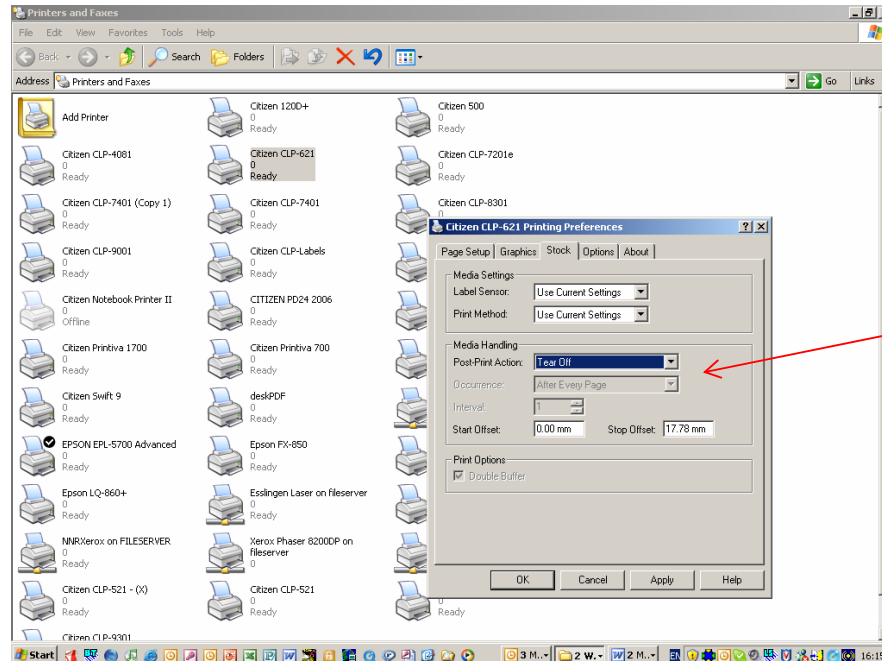


Click the down arrow identified

And this area will expand to show the various options available in the driver

Select the option you need by clicking on it, in this case the “Tear bar”, note the text states Tear Off, which confirms the label will advance to the tear off position.

Also note one of the two boxes visible has been changed. The “Stop Offset” actually shows a figure of 17.78mm for this particular printer, this may change depending on which printer model is being used. This is the distance the label will advance after it has been printed, so the gap between the labels is over the tear bar of the printer. If for some reason this adjustment is not quite correct, change this figure a little at a time until the gap between labels is exactly where you need it to be.



In older versions of driver this section is a series of selectable buttons to turn on Tear, Cut, Peel etc.

The printer driver is now set so each label or batch of labels, when they have finished printing, will have the gap positioned over the tear bar. As stated above, it is always a good idea to “turn on” whichever option you are using on the printer as well.

### How to set the printer

**Please remember** - The driver still needs to be set to “Tear Off” for the label to advance to the Tear Off position.

CLP 521/621 – Tear bar On by default, Cutter and Peeler switch on automatically when fitted  
CLP 521Z/621Z – Tear bar On by default, Cutter and Peeler switch on automatically when fitted.

CLP 1, 2, 6 & 7000 series – Done through the control panel. Press the Pause and Feed together, release together. Use Pause to move down the menu, Feed to change an option, Stop to save it.

CLP 8301 – Tear bar set in After Print>Function Select. For the Cutter unit, follow details supplied in fitting instructions

CLP 9001 and 9301 – Tear bar switched on as CLP 8301. For the Cutter unit, follow details supplied in fitting instructions

CLP 9001R and 9301R – No Tear bar fitted to printer. Peeler part of printer, turn on in After Print menu.