

## Printing serialised labels using Seagull's "Bartender"

How to do both text and barcode serialisation.

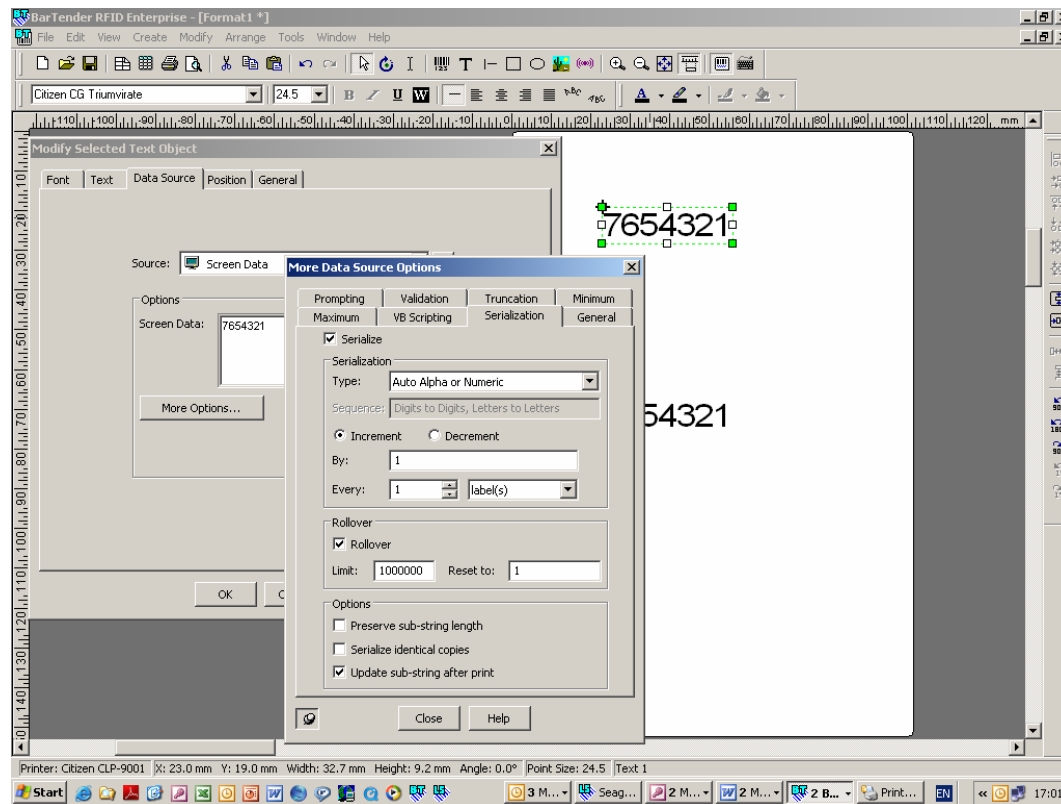
### Text process

Set up the label in Bartender, making sure the printer is selected before designing the label. In Bartender, click on the T (for text). Then click on the area where you want the information to be on the label. You will see the Alpha characters "Sample Text". Double click on it and select properties

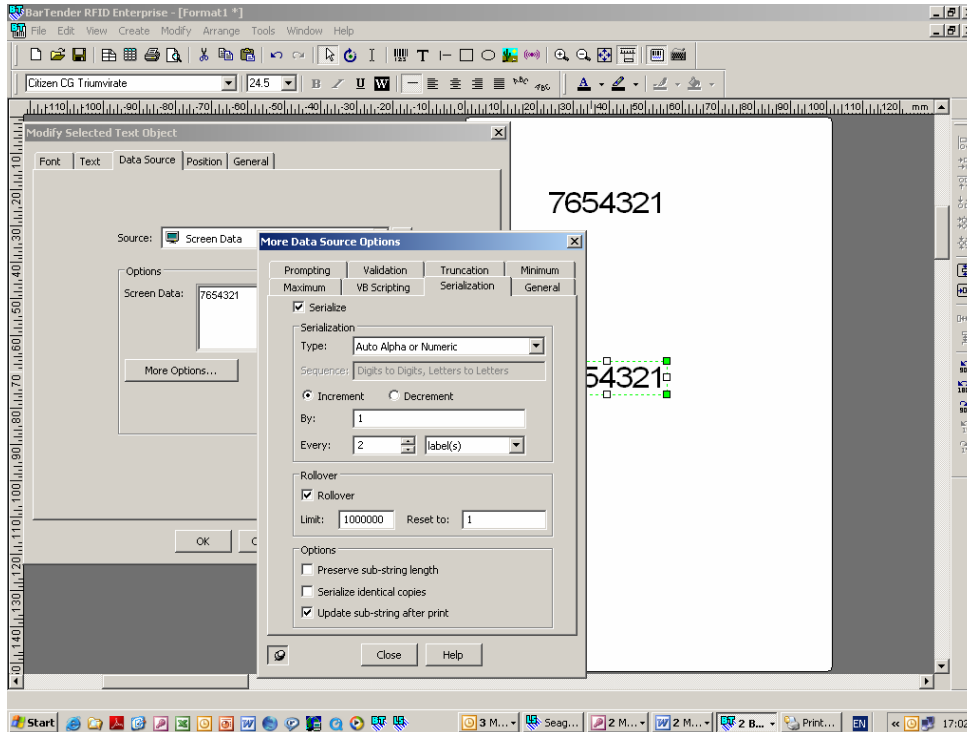
Change this to a number, in the example below we started with 7654321

Then click the "More options" button, selecting the Serialization Tab and tick Serialize

In the first print screen below I have left every thing as it is. When printed this number will change with every label printed. Click the close button at the bottom, then OK to close the other screen and the settings are complete for the first selected number.



In the second option below I have changed the line labelled “Every” from the default of 1 increment per label to 1 increment every other label (allowing the same label to print twice). This time the number will change with every other label printed. Click close at the bottom, then OK to close the other screen and the settings are complete.

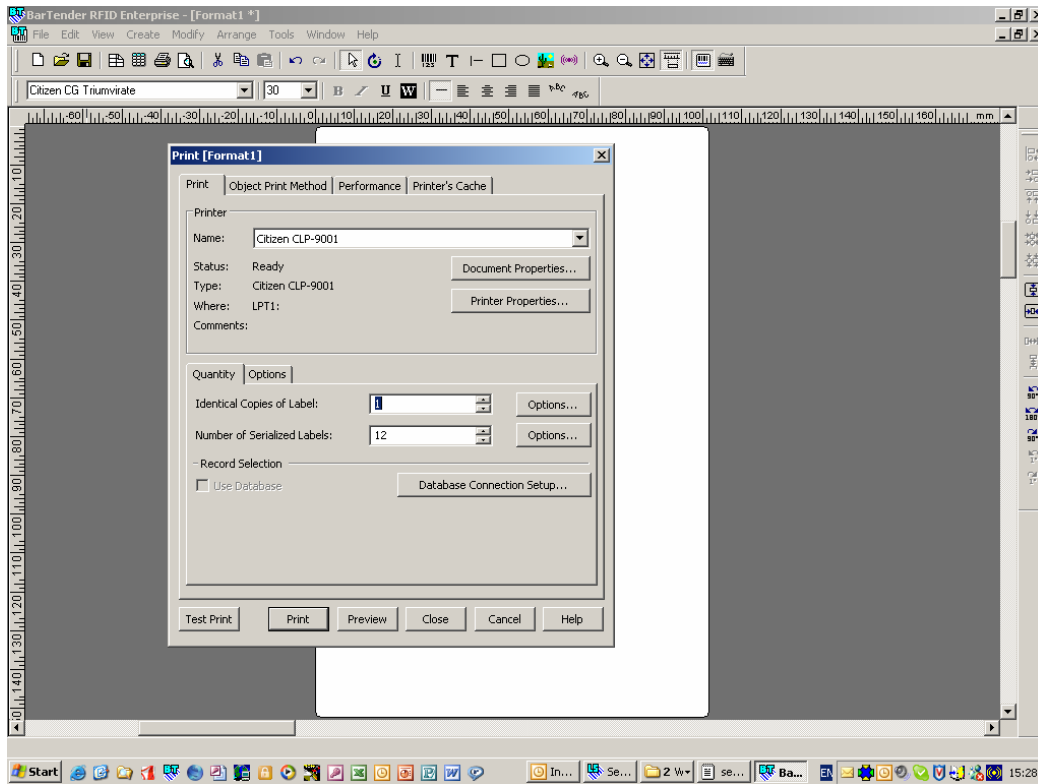


Once you have selected all the options and tested them, make sure you save the label to maintain the settings. Note the roll over option, select this if you want too, it offers 1 million serialised numbers rather than the 10000 that it used to have.

To print it, select File>print. Because Bartender knows you have already selected the printer it knows which printer to use.

Select the number of Serialised labels you want to print (this is where I have often been caught out, could not see it for looking), leave Identical labels as they are, at 1 but set the “number of serialised labels” to what ever number you want

We have used the CLP 9001 printer because it was on our desk at the time but the process is the same.

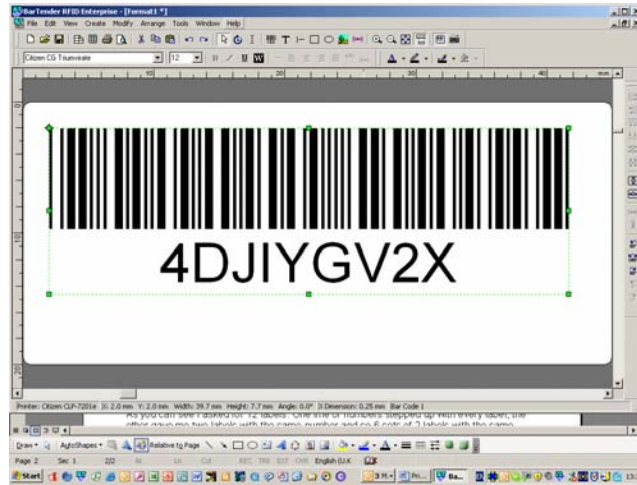


Because I actually set up two groups of numbers, in the first set, I asked it to serialise every label changing the number each time, in the other screen I asked it to serialise every two labels. Therefore every label printed will have two numbers on it. The top one increments with every label; the second increments with every second label printed.

As you can see I asked for 12 labels to print. One line of numbers stepped up with every label, the other line gives two labels with the same number.

## Barcode Process

If you want to produce a label like the one below and serialise that, please follow the steps below, this time the text is both Alpha and numeric, all stepping up one label at a time;



- Below Left, screen shows what happens when you right click on the barcode
- Below Right, screen shows the selections needed to maintain the barcode detail and serialise both the barcode and human readable (the text below in this case but it can be above as well) in the required sequence. In this case the customer wants to use all the letters of the alphabet and all 10 digits as well



This screen shows what is seen when the print button is selected and the number of labels required is also selected. Note the line "number of identical" etc shows 25. This will print 25 labels starting 4DJIYGV2X and finishing 4DJIYGV3L



To specify a start point at "time of printing" you need to set-up a prompt. Again, from the "More Options" dialog of the barcode object, select the "Prompting" tab and tick the "Prompt at Print-time" checkbox. To retain the next barcode to print "serial value" for the next print job, make sure the "Update default reply after print" checkbox.

