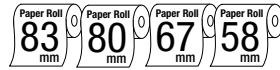


PPU-700/PHU-331

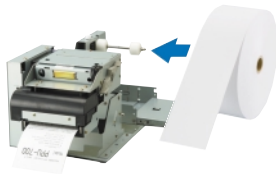


Complete unit
PPU-700/PHU-331
**The bottom plate is not included.*



- 150 mm/sec high-speed printing
- 83 / 80 / 67 / 58mm selectable paper width
- Easy paper handling
- Optional interface cards
- Presenter unit incorporated
- Label/Black mark function(option)
- Bitmap data registration (NV memory)
- Barcode printing
- Page mode
- Two color printing
- Smoothing font
- Easy customization by software
- Large roll paper diameter up to 203mm (PHU-331/332)
- Paper thickness up to 0.150mm (Option)
- Driver: WinXP/2003

Easy roll paper installation



PPU-700/PHU-331S



PPU-700/PHU-331T

Accessories

Interface cards



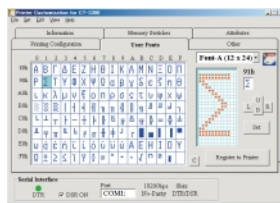
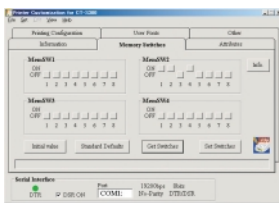
Parallel
(950035-00)

Serial
(950034-00)

USB
(950036-01)

Ethernet
(950052-00)

Customization software



Specifications

Printing method	Line thermal dot printing
Printing width	80mm/640 dots (paper width 83mm) 72mm/576 dots (paper width 80mm) 60mm/480 dots (paper width 67mm) 54mm/432 dots (paper width 58mm)
Dot pitch	8 × 8 dots/mm (203 dpi × 203 dpi)
Printing speed	Max. 150mm/sec (35.4 lines/sec)
Number of columns	80mm paper: Font A - 48 columns Font B - 64 columns Font C - 72 columns
Character size (W × H)	1.25mm × 3.00mm (Font A: 12 × 24 dots) 0.88mm × 2.13mm (Font B: 9 × 17 dots) 0.88mm × 2.00mm (Font C: 8 × 16 dots)
Character table	Code page 437, 850, 852, 857, 858, 860, 863, 864, 865, 866, Katakana, WPC1252, Thai code 18
Barcode type	UPC-A/E, JAN-13/8, ITF, Code 39, Code 128, CODABAR, Code 93
Logo registration/print	Capable of registering user-defined characters print and logos into flash memory
Line spacing	4.23mm (1/6 inch); can be set by a command
Paper	Width 83/80/67/58mm Diameter 203 mm or less Thickness 0.065 - 0.150mm Core diameter 12 mm (paper thickness: 0.065 ~ 0.080mm), 25.4 mm (paper thickness: 0.080 ~ 0.150mm) Recommended paper TF-50KS-E-2D, TF-62KS-E (Nippon Paper industries)
Interface	Parallel (IEEE 1284), Serial (RS-232C), USB
Input buffer	4K bytes (72 bytes selectable with a DIP switch)
NV user memory	256K bytes
Sensors	Paper near end sensor (adjustable, for PHU series) (photo interrupter) Paper end sensor (mechanical switch) Black mark sensor (photo interrupter) Cover open sensor (mechanical switch) Presenter sensor (photo interrupter)
Power supply	24V ± 7%
Power consumption	100W
Weight	PPU700: 2.1 kg (incl. control PCB) PHU-331: 0.95 kg (excl. roll paper)
Dimensions (W × D × H)	PPU-700: 163.2 (incl. control PCB) × 176 × 143mm PHU-331: 114.4-138.9 × 122.6 × 137.2mm
Operating environment	0 ~ 50°C, 35 ~ 85% RH
Storage environment	-20 ~ 60°C, 10 ~ 90% RH
Reliability	Thermal head: 100,000,000 pulses or 100km Auto cutter: 1,000,000 cuts
EMC and safety standards	UL, C-UL, FCC Class A, TUV-GS, CE marking